



DIAMONDBACK

Nissans and Jeeps Without Tracks



INSTALLATION GUIDE

CVR-270.6

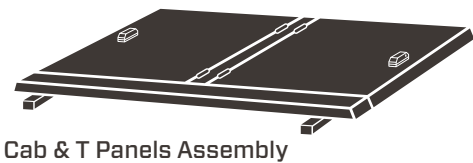
75 minutes
Normal install time

Keep an eye out for these icons:

IMPORTANT!
Important installation information

Helpful Hints
Tips to assist installation

PARTS INCLUDED:



Cab & T Panels Assembly



Tail Panel

270 Cover



Bulkhead Angle



1/4" Self-Drilling
Screws (5)



1/4"
Rivet Nuts (5)



1/8" Hex
Key



Gas
Springs (6)



Rivet Nut
Installation Tool



1/4" Lock
Washers (5)



1/4" Flat
Washers (5)



1/4" Hex
Bolts (5)



Bed-Rail
Edge Trim (2)



Cap
Clamps (6)

TOOLS REQUIRED:



Drill



3/8" Nut
Driver Bit



25/64"
Drill Bit



5/16"
Drill Bit



Utility
Knife



Ratchet
Wrench,
(Torque Wrench
preferred)



9/16"
Wrench



Rubber
Mallet



9/16"
Socket



7/16"
Socket



Marker



Tape
Measure
(optional)

PRE-INSTALLATION NOTES (REVIEW ALL OTHER INCLUDED INSTALLATION GUIDES BEFORE BEGINNING)

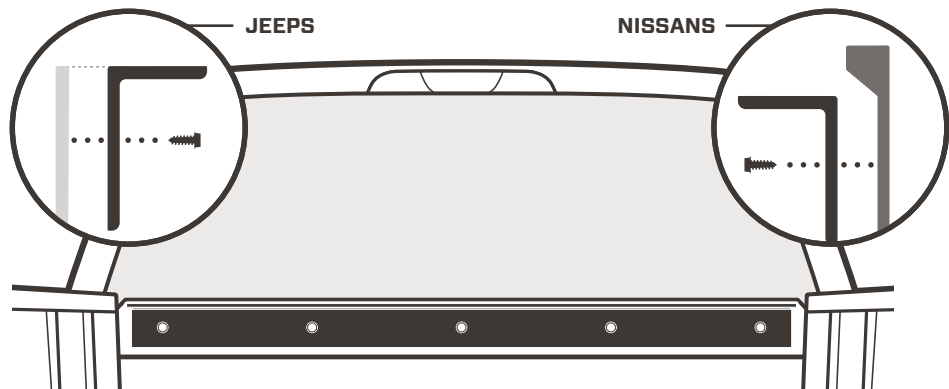


Most trucks require the **bulkhead weatherstrip** to be installed and some require additional bulkhead preparations. Please refer to the instructions in the **Bulkhead Prep Kit** prior to mounting the cover.

If you are installing a bin, refer to the bin's installation guide for details.

PREPARE THE BULKHEAD

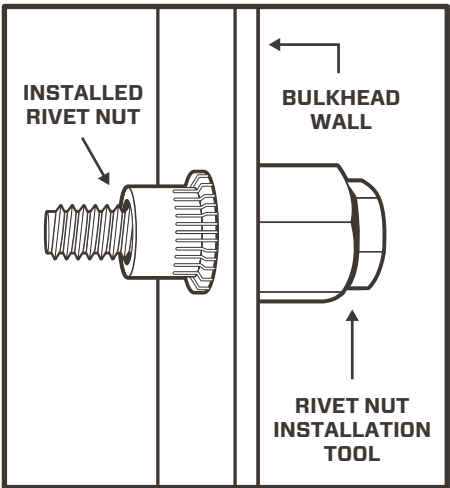
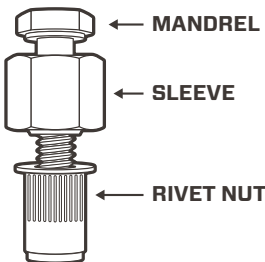
1 Referencing the image below, align the **Bulkhead Angle (longer leg down)**, centered side to side between the bedrails. For Jeeps, ensure it's level with the bulkhead top; for Nissans, just below the bulkhead shelf. Attach using a drill, 3/8 nut driver bit, and included self drilling screws.



2 Detach bulkhead angle by removing the self-drilling screws and set aside. Use the 25/64" drill bit to enlarge the holes in the bulkhead left by the self-drilling screws.

Protection is needed to avoid drilling directly into the cab. Create a physical stop on the drill bit or place protection between the bulkhead and cab to prevent damage.

3 Thread a rivet nut onto the **rivet nut installation tool**. Hand-tighten until the hexagonal sleeve is tight to the face of the rivet nut. Next, using a rubber mallet, gently tap rivet nut into the pilot hole.



4 Use a 9/16" wrench to hold the sleeve of the **rivet nut installation tool**. Then, tighten the mandrel with a 7/16" socket until the rivet nut deforms and locks against the interior of the bed wall.

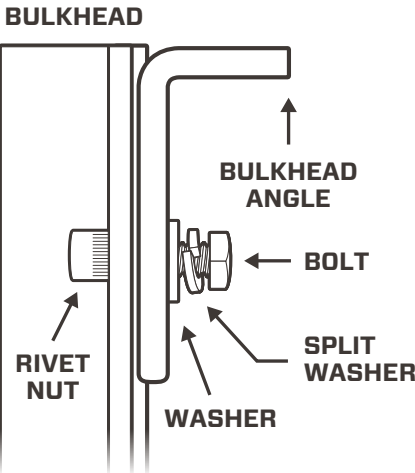
At approximately 2 full revolutions, the nut should be tight. Do NOT overtighten or you will risk stripping the rivet nut.

5 Remove the installation tool by unscrewing the mandrel.

6 Repeat steps 3-5 for each rivet nut installation.

7 With all rivet nuts installed correctly, reattach the bulkhead angle using the provided hex bolts and washers as shown. Tighten with a 7/16" socket, **ensuring not to overtighten** the bolts or you will strip the rivet nuts.

Re-installing the bulkhead angle using the hex bolts and washers is easiest if you enlarge the holes in the bulkhead angle using the 5/16" drill bit.



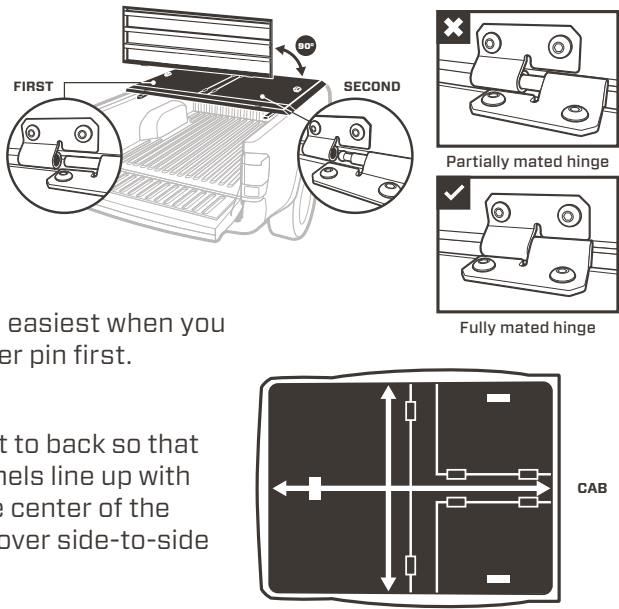
MOUNT THE COVER

8 Place the **Cab & T Panels Assembly** on the front half of the bed.

9 Attach the tail panel by holding it at a 90° angle from the bed rails and begin to mate the driver's side hinge first which is slightly longer.

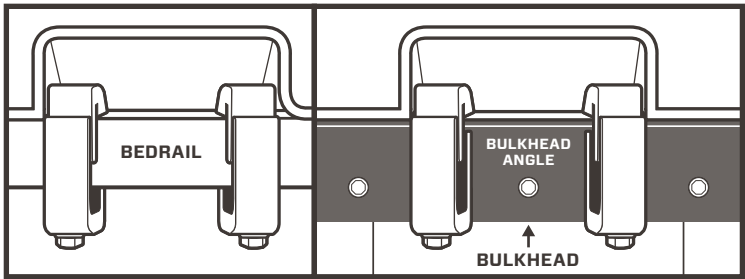
★ Mating hinges is easiest when you engage the longer pin first.

10 Position the cover front to back so that the front of the cab panels line up with the outside edge of the center of the bulkhead. Center the cover side-to-side on the truck.



11 Secure the T-panel to the truck by tightening two cap clamps under each of the three ends of the T-panel.

Place the clamps' bottom jaws under the bed rails at the two sides and under the bulkhead angle mounted to the bulkhead. Uniformly tighten the cap clamps using a 9/16" socket to between **4-5 ft-lbs.**

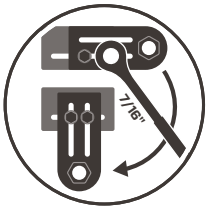


! While tightening clamps, be aware of possible bed rail cap deformation. Overtightening clamps will damage bed rail caps and cause leaking.

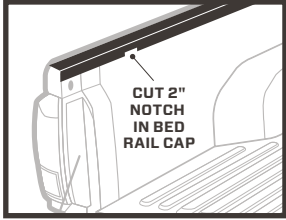
! Retighten after a week of use. Check them every time you haul on top.

PREP FOR THE LOCK RODS

12 Unbolt and move one of the bolts of the lock-rod guide brackets to the second, unoccupied slot using a 7/16" socket. Repeat this at each of the cover's bracket locations.



13 If your plastic bed rail cap extends below the metal edge of your bed rail, trim the excess at each lock rod location so that it's flush with the metal bed rail's edge.



ADJUST THE LOCK RODS

14 Loosen the set screws for the tail and cab panel lock rods with the provided hex key and retighten each lock rod after ensuring the following...

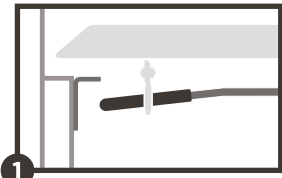
CAB PANELS:

CORRECT ORIENTATION

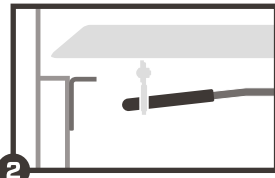


HANDLE OPEN

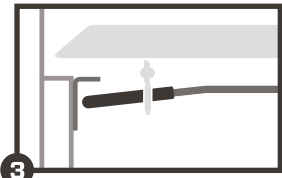
HANDLE CLOSED



1 The angled orientation is always maintained.



2 With the lock handle in the open position, the rod tips just clear the bulkhead angle.



3 With the lock handle in the closed position, the lock rods are fully under the bulkhead angle and engaged as much as possible. Ensure the lock handle fully closes.

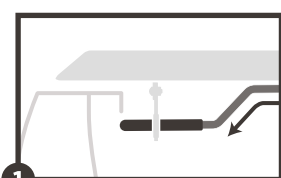
TAIL PANEL:

CORRECT ORIENTATION

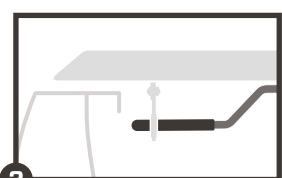


HANDLE OPEN

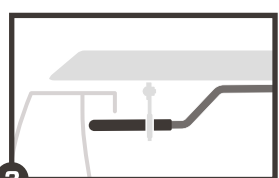
HANDLE CLOSED



1 The Z bend orientation is always maintained.

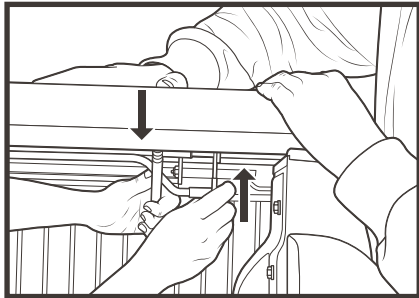


2 With the lock handle in the open position, the rod tips clear the the bed rails.



3 With the handle in the closed position, the rod tips do not hit the bed walls.

15 After properly aligning the lock rods in the closed position, it is time to tighten all brackets using a 7/16" socket. To ensure a tight seal, it is crucial to simultaneously push up on the bracket AND apply downward pressure on the cover. Repeat for all bracket locations.



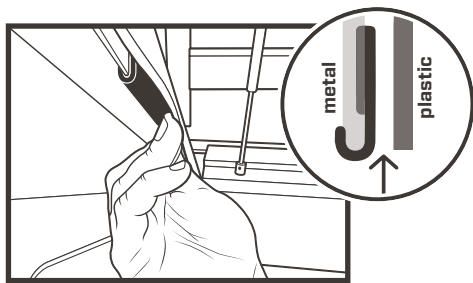
! The panels may be tough to open and close at first. Leave the panels closed as much as possible to allow the weatherstrip to break in. After a few days, you'll find things working smoothly.

! If you are also installing a bin, do so now. Refer to the bin's Installation Guide for details.

ATTACH THE BED RAIL EDGE TRIM

16 Peel the red adhesive backing from the edge trim pieces. Affix them to the metal bed rail in the correct orientation at the two points where the lock rods pass underneath.

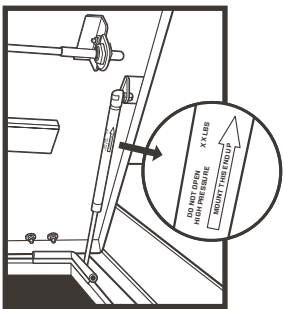
★ Bed rail edge trim protects the lock rod end cap from wear, and helps draw the panels down and compress the weatherstrip. When installed properly, it will be a little tough to turn the lock handle at first.



ATTACH THE GAS SPRINGS

17 Identify the 4 lighter gas springs and attach 2 to each **cab panel**.

! Make sure the barrel end is up. If you install your gas springs upside down, they'll fail.



18 Attach the 2 remaining gas springs on the **tail panel**, again making sure the barrel end is up.

19 Leave the cover closed and locked for 24 hours to allow the pressure-sensitive weatherstrip adhesive to fully cure.

24 hours
Adhesive
cure time

For first 2 weeks after installation
open tail panel on cover before operating tailgate.

