



DIAMONDBACK

'05-up Toyota Tacoma with Deck Rail System



Install Video

INSTALLATION GUIDE

CVR-4

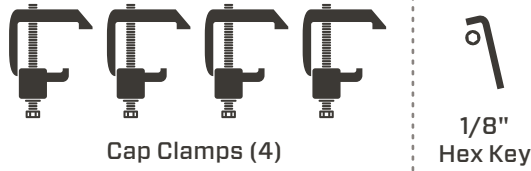
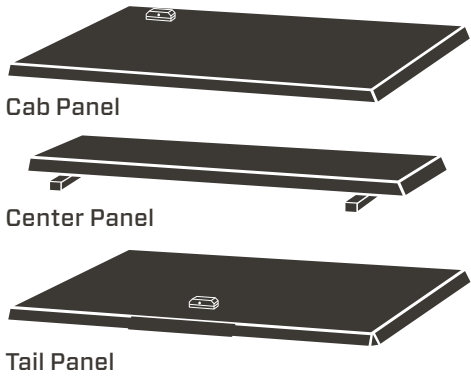
60 minutes
Normal install time

Keep an eye out for these icons:

IMPORTANT!
Important installation information

★ Helpful Hints
Tips to assist installation

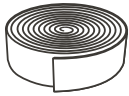
PARTS INCLUDED:



TOOLS REQUIRED:



PRE-INSTALLATION NOTES (REVIEW ALL OTHER INCLUDED INSTALLATION GUIDES BEFORE BEGINNING)



Bulkhead Bar Weatherstrip

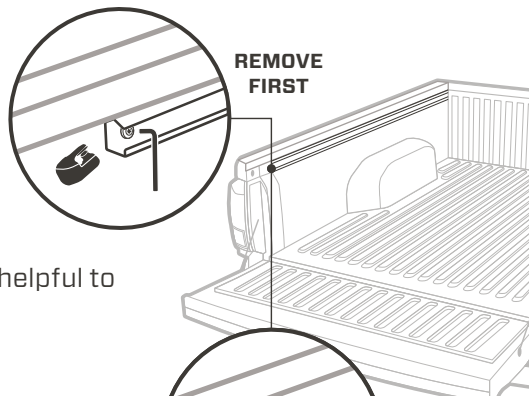
Most trucks require the **bulkhead weatherstrip** to be installed and some require additional bulkhead preparations. Please refer to the instructions in the Bulkhead Prep Kit or Bed Prep Kit **PRIOR** to mounting the cover.

If you are installing a bin, refer to the bin's installation guide for details.

PREPARE CARGO BED & MOUNT PANELS

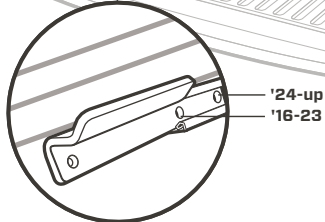
1 Remove the plastic cap from the tailgate end of the driver-side track by pressing its tab. Plastic cap will not be reused with your cover installed.

2 Use a T30 Torx wrench to remove the factory bolt near the tailgate end of the track.



★ Penetrating oil may be helpful to remove these bolts.

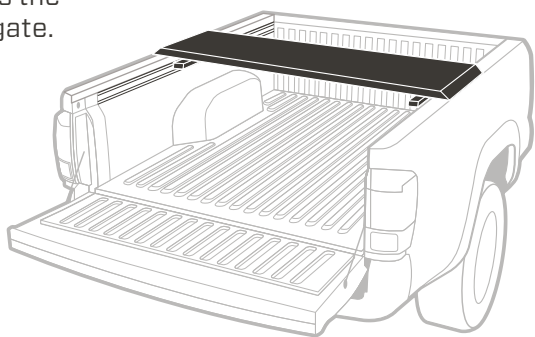
3 Slide the driver-side lock-rod striker bracket into the track until its corresponding hole aligns with the factory bolt. Reinsert the factory bolt and retighten it with the Torx wrench.



SLIDE STRIKER BRACKET SECOND

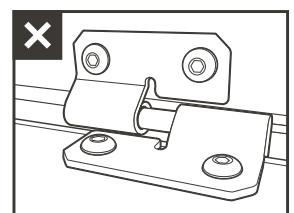
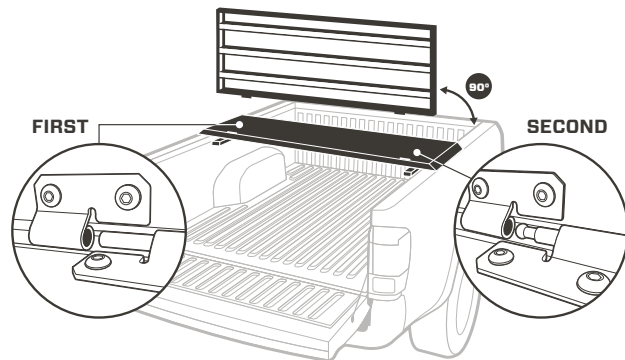
4 Repeat steps 1-3 on the passenger side.

5 Place the center panel across the bed, cheated toward the tailgate.

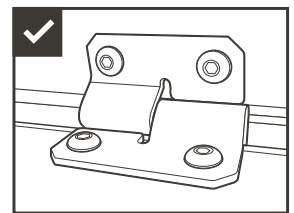


! Each panel is tapered front to back. Make sure the arrow on the underside of the panel is pointed toward the tailgate.

6 Attach the tail panel by holding it at a 90° angle from the bed rails and begin to mate the driver's side hinge first which is slightly longer.



Partially mated hinge



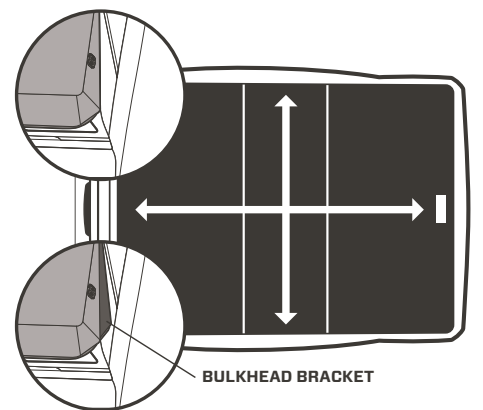
Fully mated hinge

★ Mating hinges is easiest when you engage the longer pin first.

7 In the same way, attach the cab panel by holding it at a 90° angle from the bed rails and begin to mate the passenger side hinge first which is slightly longer.

CAUTION! Be sure all hinges are fully mated before lowering panels.

8 **'16-23:** Position the cover front to back so that the front of the cab panel lines up with the outside edge of the center of the bulkhead.



'24-up: Position the cover so that it lands at the point where the bulkhead bracket and bedrail cap meet.

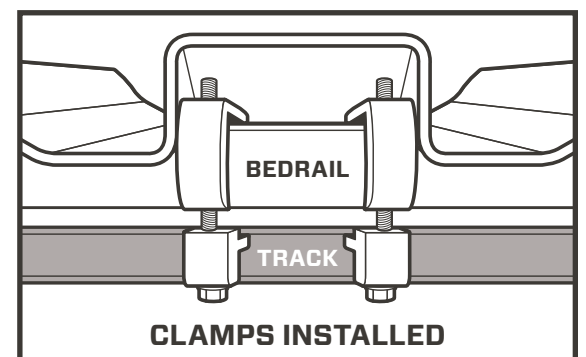
POSITIONING CLAMPS

9 Position the cap clamps as far apart as possible under the center panel. Attach the center panel by uniformly tightening a cap clamp using a 9/16" socket to between **4-5 ft-lbs**.

! While tightening clamps, be aware of possible bed rail cap deformation. Overtightening clamps will damage bed rail caps and cause leaking.

! Retighten after a week of use. Check them every time you haul on top.

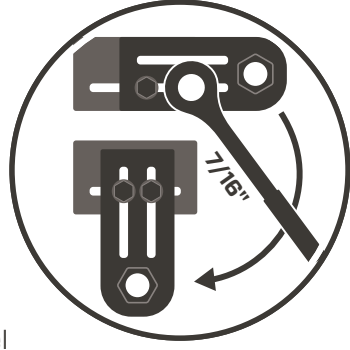
! The bottom halves of the cap clamps should be in the track system.



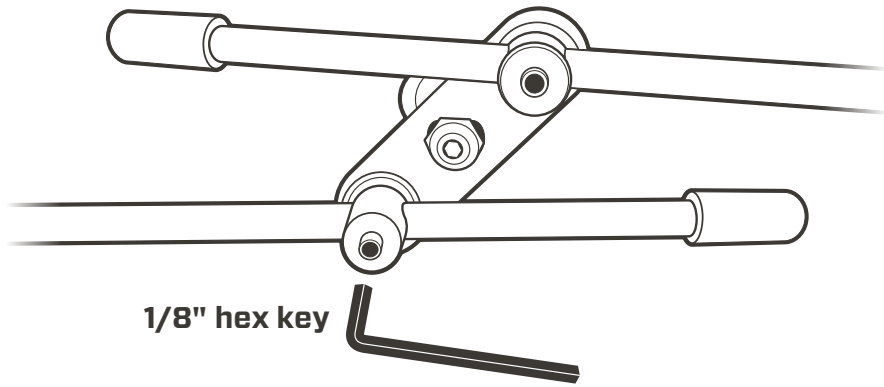
CLAMPS INSTALLED

ADJUST THE LOCK RODS

10 Unbolt and move one of the bolts of the lock-rod guide brackets to the second, unoccupied slot using a 7/16" socket. Repeat this on each of the cover's four brackets.



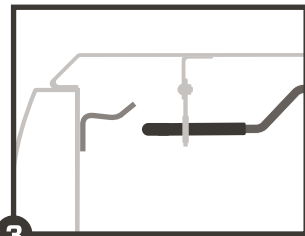
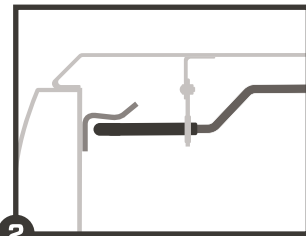
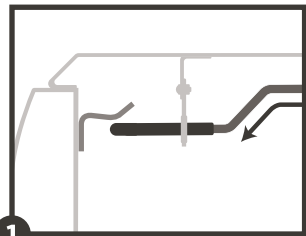
11 Loosen the set screws for the tail panel lock rods with the provided hex key and retighten each lock rod after ensuring **three things...**



CORRECT ORIENTATION

HANDLE CLOSED

HANDLE OPEN

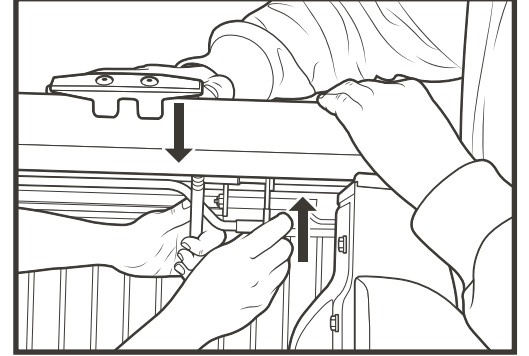


1 The Z bend orientation is always maintained

2 With the lock handle in the closed position, the lock rods are fully under the striker brackets and engaged as much as possible. Ensure the lock handle fully closes.

3 With the lock handle in the open position, the rod tips just clear the striker brackets.

12 After properly aligning the lock rods in the closed position, it is time to tighten all brackets using a 7/16" socket. To ensure a tight seal, it is crucial to simultaneously push up on the bracket AND apply downward pressure on the cover. Repeat for all bracket locations.



! The panels may be tough to open and close at first. Leave the panels closed as much as possible to allow the weatherstrip to break in. After a few days, you'll find things working smoothly.

★ The cab panel has a safety spring lock handle ensuring you engage the lock rods when closing the panel. This helps prevent accidental opening of the panel while driving.

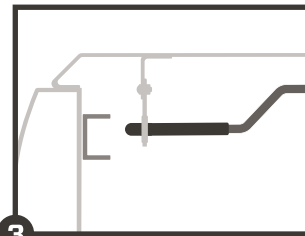
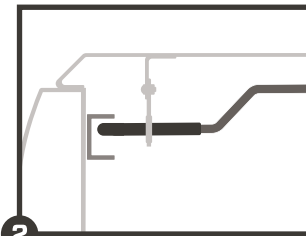
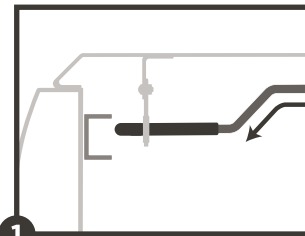
! If you are installing a Cross Bin, do so now. Refer to the Cross Bin Installation Guide for details.

13 Repeat steps 11 and 12 for the cab-panel lock rods, but use the inside of the tracks instead of the bends in the striker brackets.

CORRECT ORIENTATION

HANDLE CLOSED

HANDLE OPEN



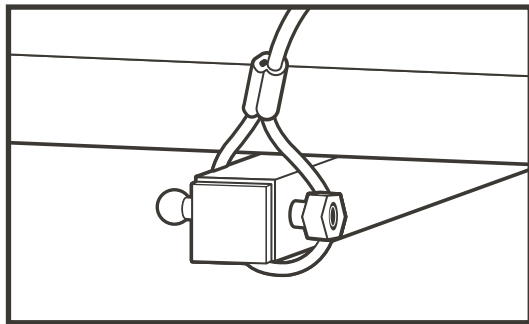
1 The Z bend orientation is always maintained

2 With the lock handle in the closed position, be sure the lock rods land inside the track and are engaged as far as possible.

3 With the lock handle in the open position, ensure the rod tips clear the track.

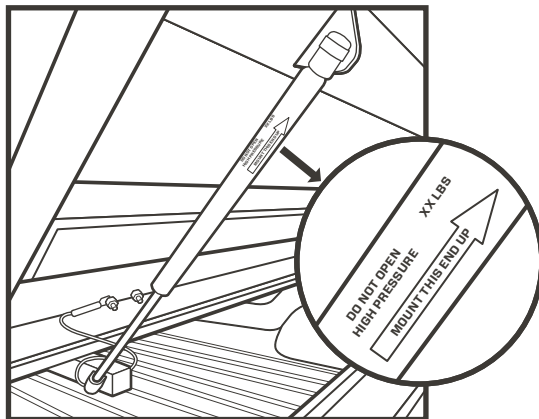
ATTACH THE GAS SPRINGS & SAFETY CATCH

14 Open the cab panel. Have a 2nd person support it in the open position. Loop the end of the cable tethers around the ball stud arms, making sure to go beyond the ball stud and nut.



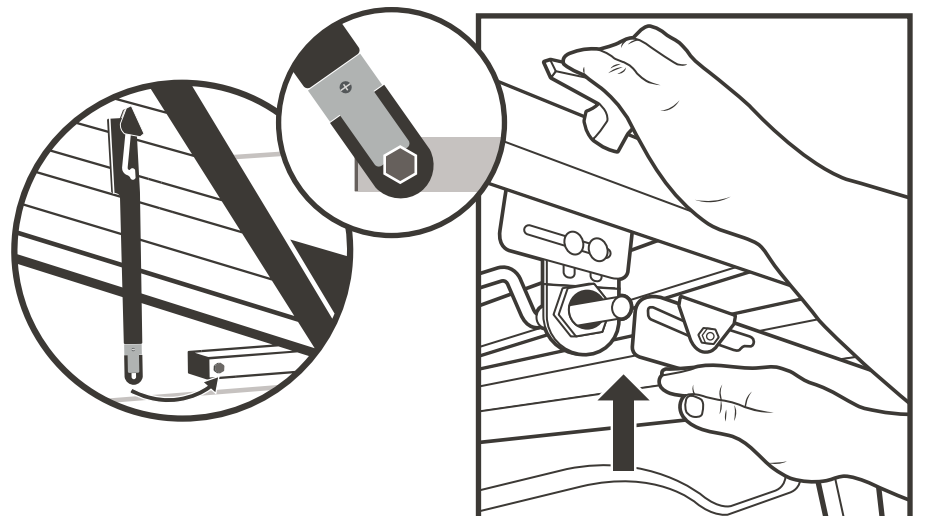
15 Attach 2 gas springs to the cab panel.

! Make sure the barrel end is up. If you install your gas springs upside down, they'll fail.



★ If 2 of your gas springs have heavier poundage printed on them, use them here.

16 Attach the safety catch by pulling down on the panel and pushing the keyhole at the bottom of the safety catch around the nut, making sure to engage the spring clip.



★ With the safety catch in place, your cab panel will only open partially. To fully open the panel, pull down on panel while using your other hand to push up on the flat part of the catch until it disengages.

17 Attach the 2 remaining gas springs on the tail panel, again making sure the barrel end is up.

18 Leave the cover closed and locked for 24 hours to allow the pressure-sensitive weatherstrip adhesive to fully cure.

24 hours
Adhesive cure time

For first 2 weeks after installation
open tail panel on cover before operating tailgate.