



DIAMONDBACK

DiamondBackCovers.com / 800 935 4002

COVER-MOUNT RACK

INSTALLATION GUIDE

AX-10

1 hour
Normal install time

Keep an eye out for these icons:

IMPORTANT!
Important installation information

Helpful Hints
Tips to assist installation

PARTS INCLUDED:



Posts (2)



Crossbar



Pipe Sockets (2)



End Caps (2)



5/16" x 1" SS Button Head Bolts (6)



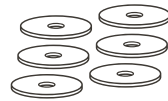
Cleats (2)



5/16" x 3.5" SS Button Head Bolts (4)



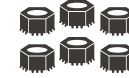
5/16" Foam Washers (4)



5/16" Fender Washers (6)



5/16" Flat Washers (6)



5/16" Nylon Lock Nuts (6)



5/16" SS Lock Washers (4)



5/16" Stainless Nuts (4)

TOOLS REQUIRED:



3/16" Hex Key



5/16" Hex Key



Ratchet Wrench



1/2" Socket



4" C-Clamp



Drill



5/16" Bit



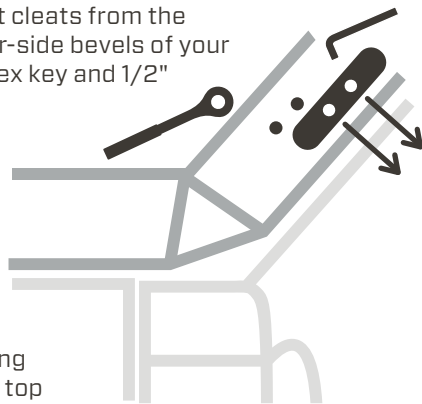
Pipe Cutter



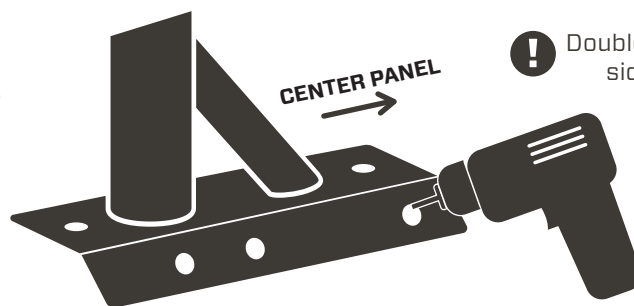
Hacksaw

INSTRUCTIONS

- 1 Remove the rearmost cleats from the driver- and passenger-side bevels of your cover using a 3/16" hex key and 1/2" socket.
- 2 Place a **post** base plate onto the cover over the driver-side pair of open cleat holes, its diagonal brace pointed toward the center panel, its trailing edge aligned with the top of the cover's rear bevel.
- 3 Clamp the base plate to the cover.
- 4 From under the cover, use the cleat holes as a template to drill up through the base plate with a 5/16" bit.

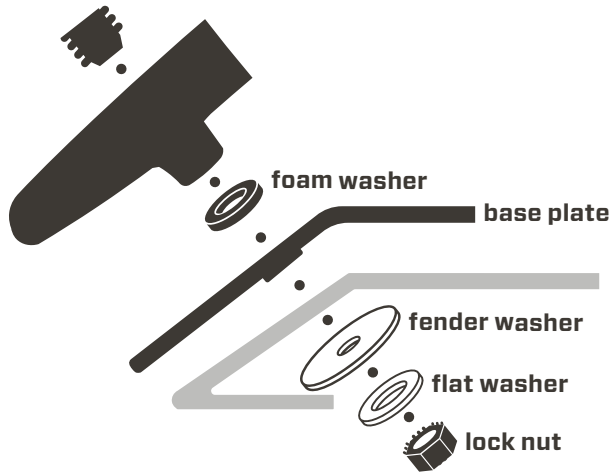


- 5 Note the locations of cover's studs and rod guide bracket as they relate to the location of the base plate.
- 6 From outside the cover, drill three holes through the base plate (and its foam tape) into the cover, i.e., one:
 - A. opposite the cleat holes on the base plate's angled flange,
 - B. behind the upright on the horizontal flange, and
 - C. opposite the upright on the horizontal flange.



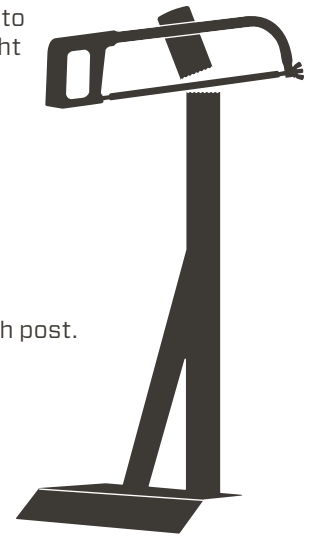
! Double-check the underside of the cover to verify that nothing will obstruct the base-plate bolts or washers at these locations. Adjust the locations of the bolt holes if necessary.

- 7** Re-insert each cleat bolt through the cleat, a foam washer, the base plate, and into the cover, in that order. Put a fender washer, flat washer, and lock nut back onto each bolt end, but do not tighten them.



- 8** Unclamp the base plate.
- 9** Insert a 1" bolt through each base-plate hole and into the cover. Put a fender washer, flat washer, and lock nut onto each bolt end.
- 10** Tighten all five lock nuts with a 1/2" socket and 3/16" hex key.
- 11** Repeat steps 2-10 on the passenger side.

- 12** Use a pipe cutter or hacksaw to shorten the posts to the height that best suits your needs.



- 13** Place a **pipe socket** onto each post.

- 14** Put the crossbar through both sockets. Center it side to side.

- 15** If you deem the crossbar too long, remove its caps and use a pipe cutter or hacksaw to trim its length to suit.

- 16** Insert a **cap** into each end of the crossbar.

- 17** Tighten all four socket set screws with a 5/16" hex key.

- 18** Mount the **cleats** where you would like them using a drill, 3/16" hex key, 1/2" socket, 3.5" bolts, lock washers, and regular nuts.

