



DIAMONDBACK

DiamondBackCovers.com / 800 935 4002

LOCK ASSEMBLY

INSTALLATION GUIDE

MISC-3

20 minutes
Normal install time

Keep an eye out for these icons:

! IMPORTANT!
Important installation information

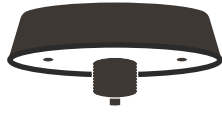
★ Helpful Hints
Tips to assist installation

PARTS INCLUDED:



Lock Handle

OR



Ring Nut



Cam



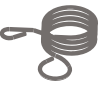
Couplers (2)



O-Rings (4)



5/16" Nylon Lock Nut



Torsion Spring (some kits)



10mm Nylon Lock Nuts (2)



10mm Phillips Machine Screws (2)



Keys

TOOLS REQUIRED:



1/8" Hex Key



Ratchet Wrench



1/2" Socket



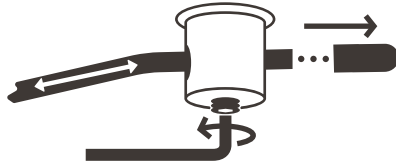
Phillips Screwdriver



Adjustable Wrench

INSTRUCTIONS

- 1 Use a 1/8" hex key to loosen the set screws that hold the lock rods to the existing couplers.

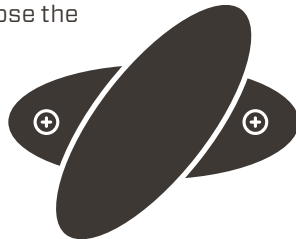


- 2 Remove the black plastic end caps from the lock rods. Remove the rods from the couplers.

- 3 Use a 1/2" socket to remove the lock nut and cam from the stem of the lock. If there's a torsion spring, detach it from the coupler it's attached to.



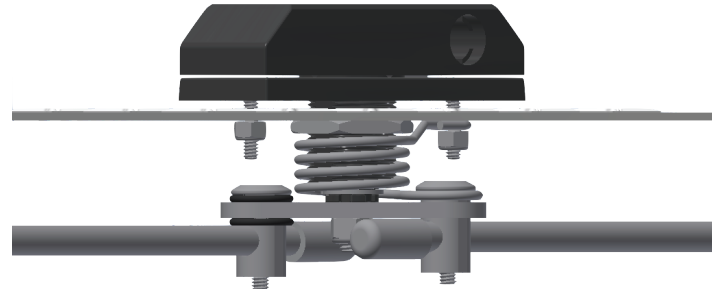
- 4 Turn the lock handle 90° to expose the Phillips machine screws that attach the handle base to the cover. Hold the nuts on the underside of the cover and remove the screws with a Phillips screwdriver.



- 5 If there's a torsion spring on the stem, remove it. Use an adjustable wrench to remove the large ring nut from the stem of the lock. Pull the lock handle out of the cover.



- 6 Reverse steps 1-5 for the installation using the existing lock rods and the new handle, ring nut, torsion spring (if applicable), screws, lock nuts, cam, O-rings, and couplers that came in the replacement bag.



- ★ If your replacement lock assembly came with a torsion spring, skip using O-rings on the coupler to which you're attaching the spring.

- ! Do not reuse any components from the original lock assembly.

- ! For the lock rods to work, orient the cam at 2 and 8 o'clock when viewed from below with the handle in the closed position.

- ! Do not over-tighten the lock nut.

